

OOTY

MASTER PLAN
FOR
OOTY LAND AREA MEGA
PROJECT



OOTY - THE LAND OF HILLS

Ooty's unique elevation and topography create a microclimate that supports diverse ecosystems, making it a critical area for biodiversity conservation and sustainable tourism initiatives.

OUR PROJECT

MEGA CONCEPT PLANNING FOR OOTY

- GRAND RACE COURSE - 120 ACRES
- CARNOSTI WELNESS RESORT - 50 ACRES
- US POLO SPORTS CLUB - 30 ACRES
- DIAMOND CLUB - 10 ACRES
- CRYSTAL LAGOON - 10 ACRES
- CHAIRMAN'S GRAND MANSION - 5 ACRES



LOCATION IMPORTANCE



GEOGRAPHICAL SIGNIFICANCE

Ooty's unique elevation and topography create a microclimate that supports diverse ecosystems, making it a critical area for biodiversity conservation and sustainable tourism initiatives.

ECOLOGICAL IMPORTANCE OF ATTRACTIONS

The major natural attractions in Ooty, such as Ooty Lake and the Nilgiri Hills, play a crucial role in maintaining the ecological balance by supporting diverse flora and fauna, promoting conservation efforts, and enhancing the region's appeal as a sustainable tourism destination.

BIODIVERSITY SIGNIFICANCE

Ooty's unique ecosystems, characterized by a blend of endemic and exotic species, contribute significantly to the ecological richness of the Western Ghats, highlighting the need for ongoing conservation efforts to protect these vital habitats from environmental threats.

OUR VISION & CONCEPT



APL GROUP

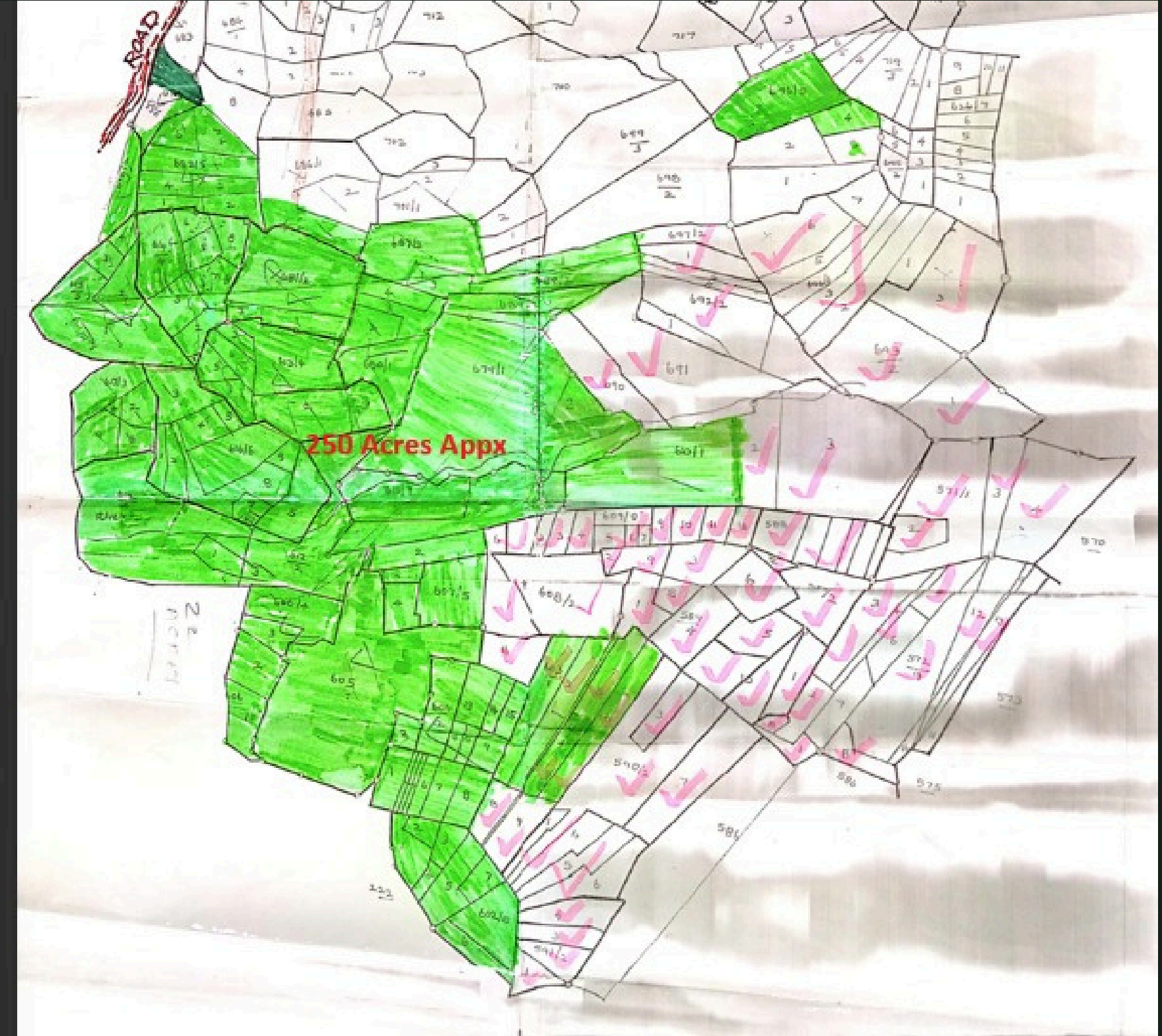
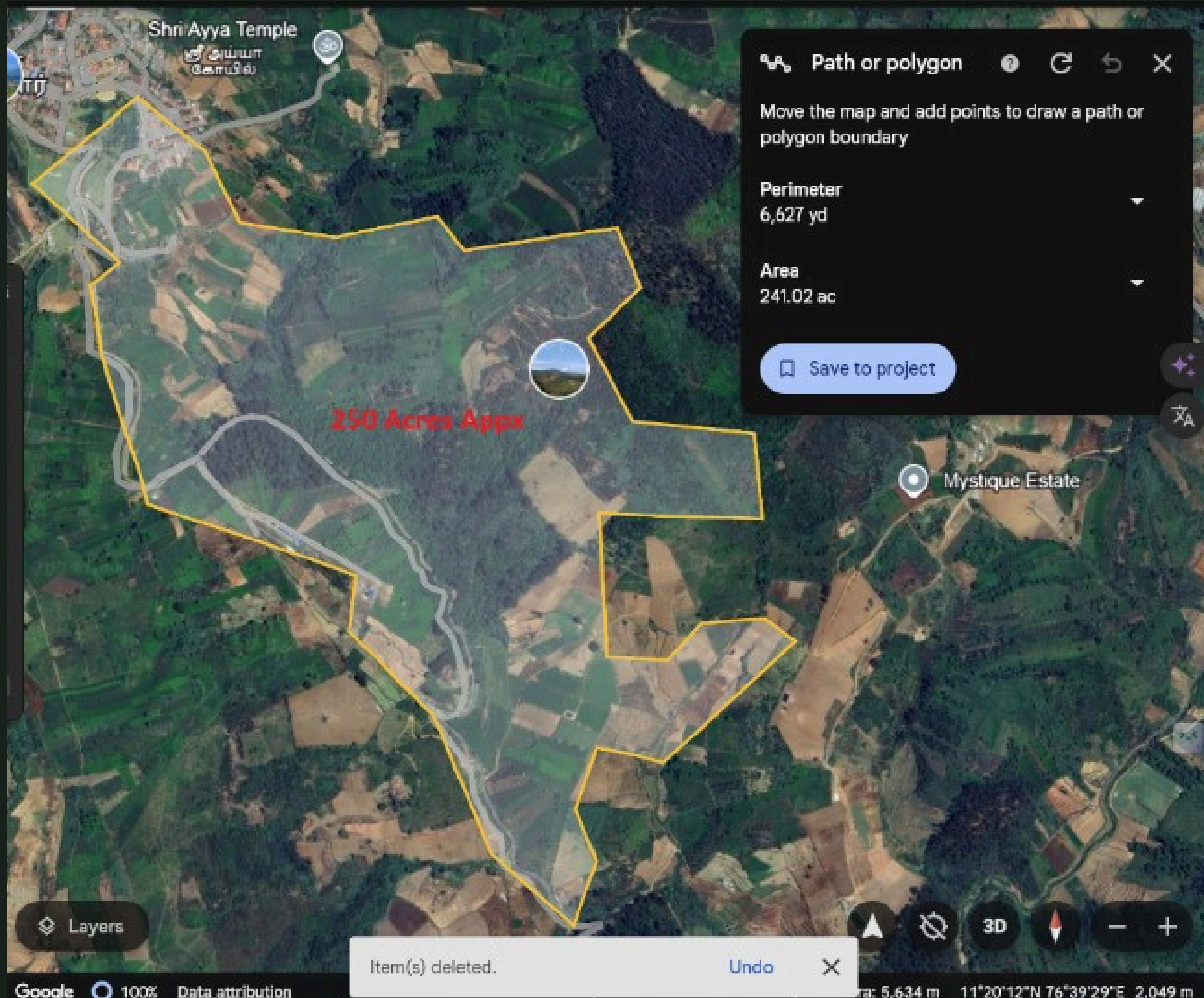
Elevating Standards, Building Futures.

MASTER PLAN
FOR
OOTY LAND AREA MEGA PROJECT

LET'S GO

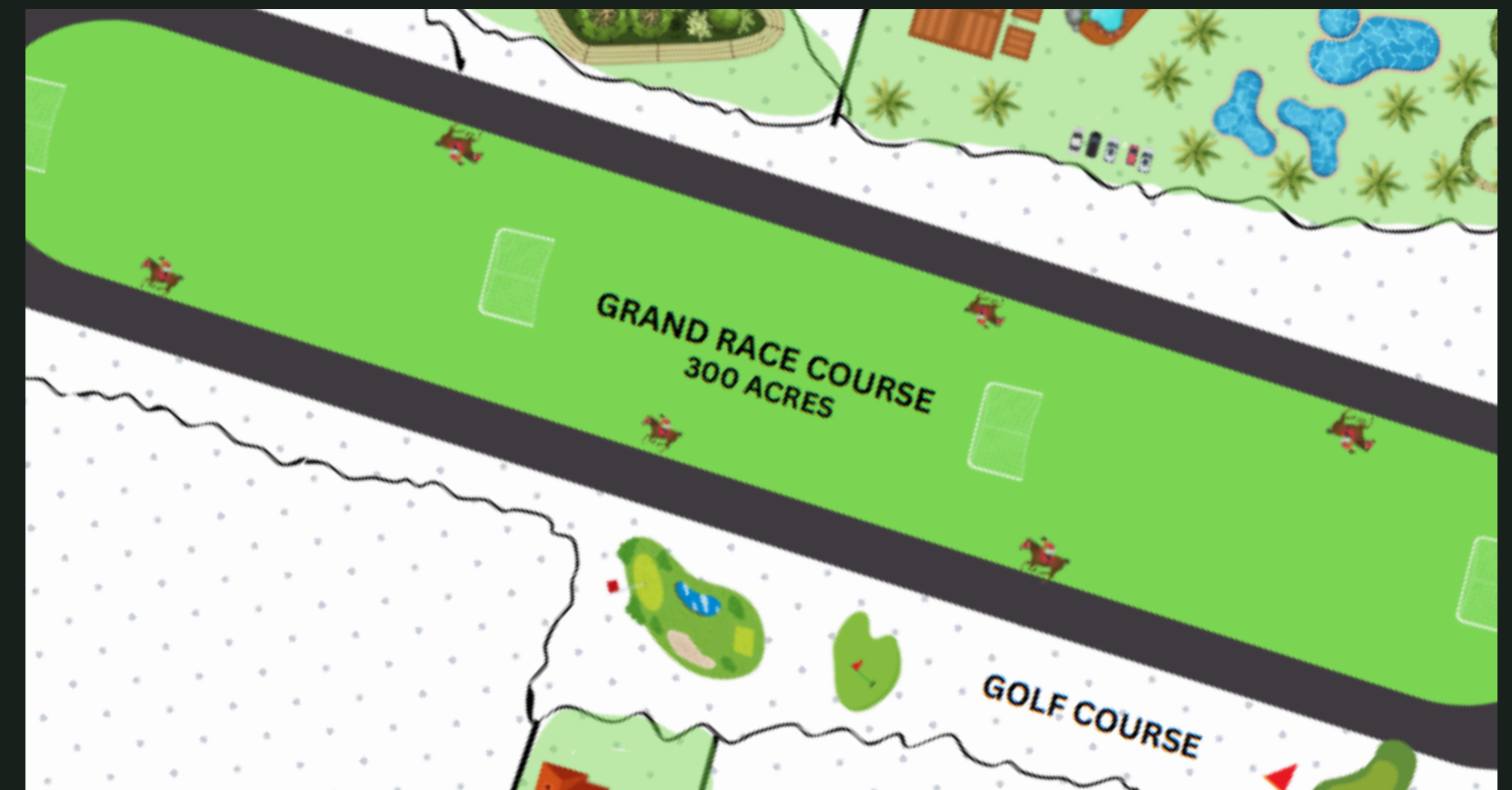
LOCATION PATH CAPTURED FROM GOOGLE EARTH

THIS IS THE PROPOSED LAND AREA PATH CAPTURED FROM GOOGLE EARTH CORDINATES, THIS WILL DEPICT HOW WE CAN PLACE THE MASTER PLAN CONCEPT IN THE HIGHLIGHTED AREA.



GRAND RACE COURSE - 120 ACRES

Race Course Road is a significant thoroughfare in many urban areas, often linked to horse racing, sports events, or major festivals, and serves as a central transportation artery connecting various districts. It hosts numerous businesses that contribute to the local economy and provide jobs, while also playing a key role in cultural events and community gatherings. Additionally, it facilitates access to public transit and attractions, making it important for both locals and tourists. As a bustling space for social interaction, featuring parks and public art, Race Course Road is a vital component of urban life, impacting economy, culture, transportation, and community engagement.



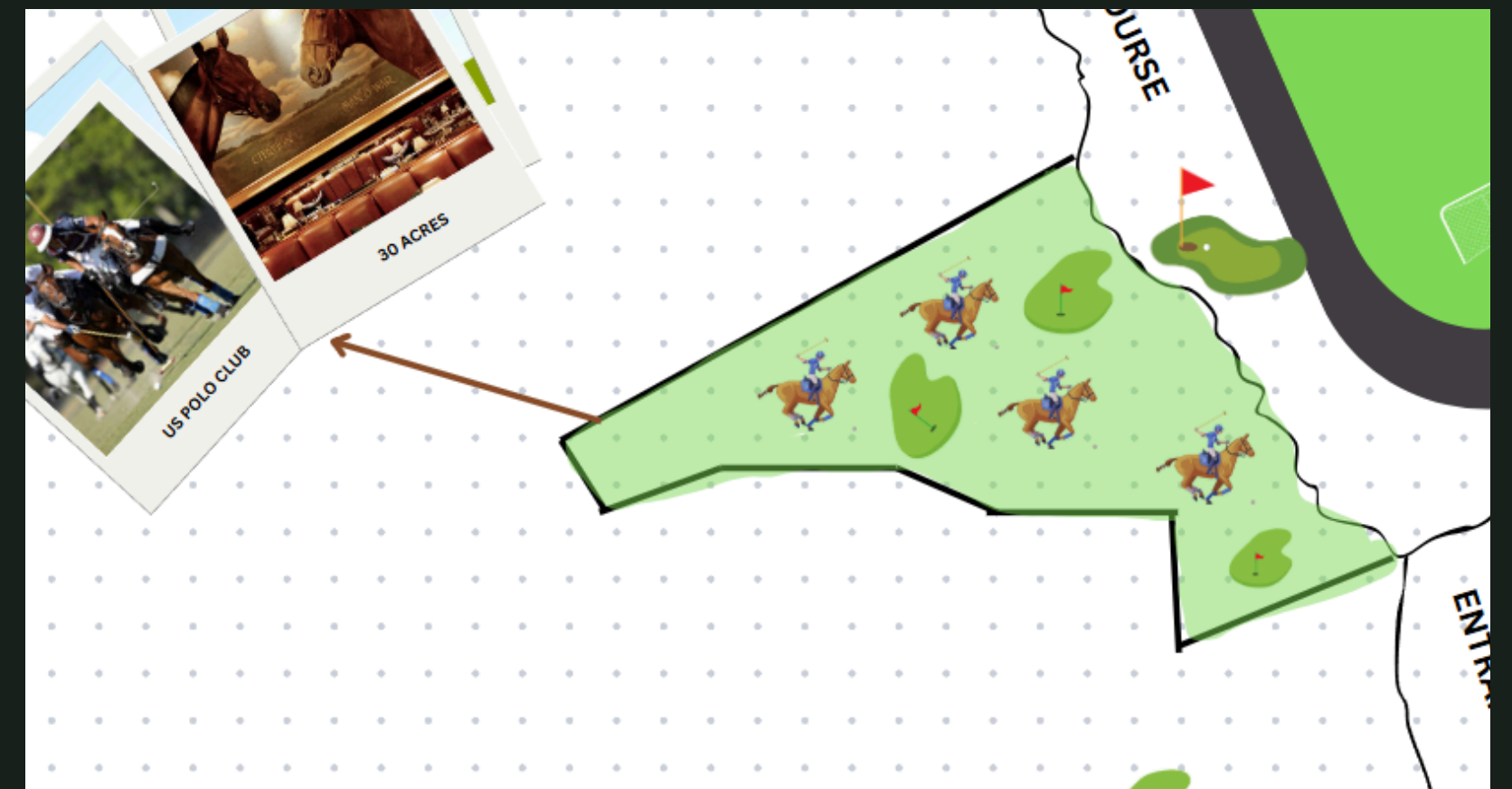
CARNOSTI WELLNESS RESORT - 50 ACRES

Discover the ultimate retreat at our wellness resort, where relaxation and rejuvenation take center stage. Nestled in a serene environment, the resort offers a variety of holistic treatments, fitness classes, and nourishing cuisine, all designed to promote well-being. Guests can indulge in spa therapies, mindfulness sessions, and nature-inspired activities, creating a perfect balance of tranquility and rejuvenation for body and mind.



US POLO SPORTS CLUB - 30 ACRES

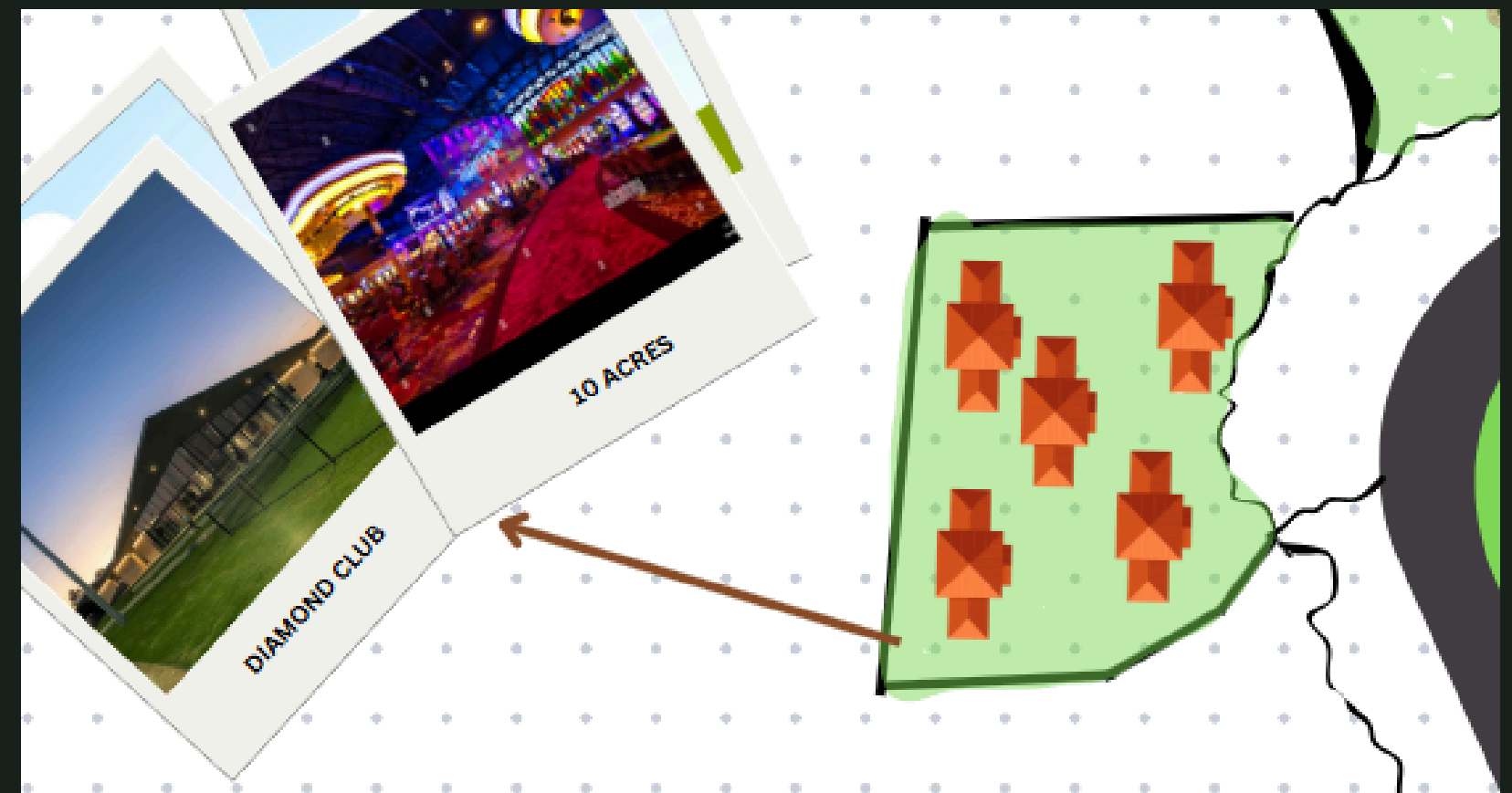
US Polo Club is a renowned brand that embodies the spirit of the sport of polo, offering a wide range of high-quality apparel and accessories for men, women, and children. Inspired by the elegance and sophistication associated with the sport, the brand blends classic style with modern trends, ensuring that each piece reflects a commitment to excellence and a passion for the game.



DIAMOND CLUB - 10 ACRES

The Diamond Club is an exclusive membership program designed to provide exceptional benefits and experiences to its members. This elite community offers a range of privileges, including access to premium events, personalized services, and unique networking opportunities. Members enjoy a sense of belonging and camaraderie, as they connect with like-minded individuals who share a passion for excellence and success.

In addition to exclusive events, the Diamond Club provides tailored resources to help members achieve their personal and professional goals. With a focus on growth and development, the club offers workshops, mentorship programs, and expert insights. By fostering a supportive environment, the Diamond Club empowers its members to thrive while enjoying the rewards of their dedication and hard work.



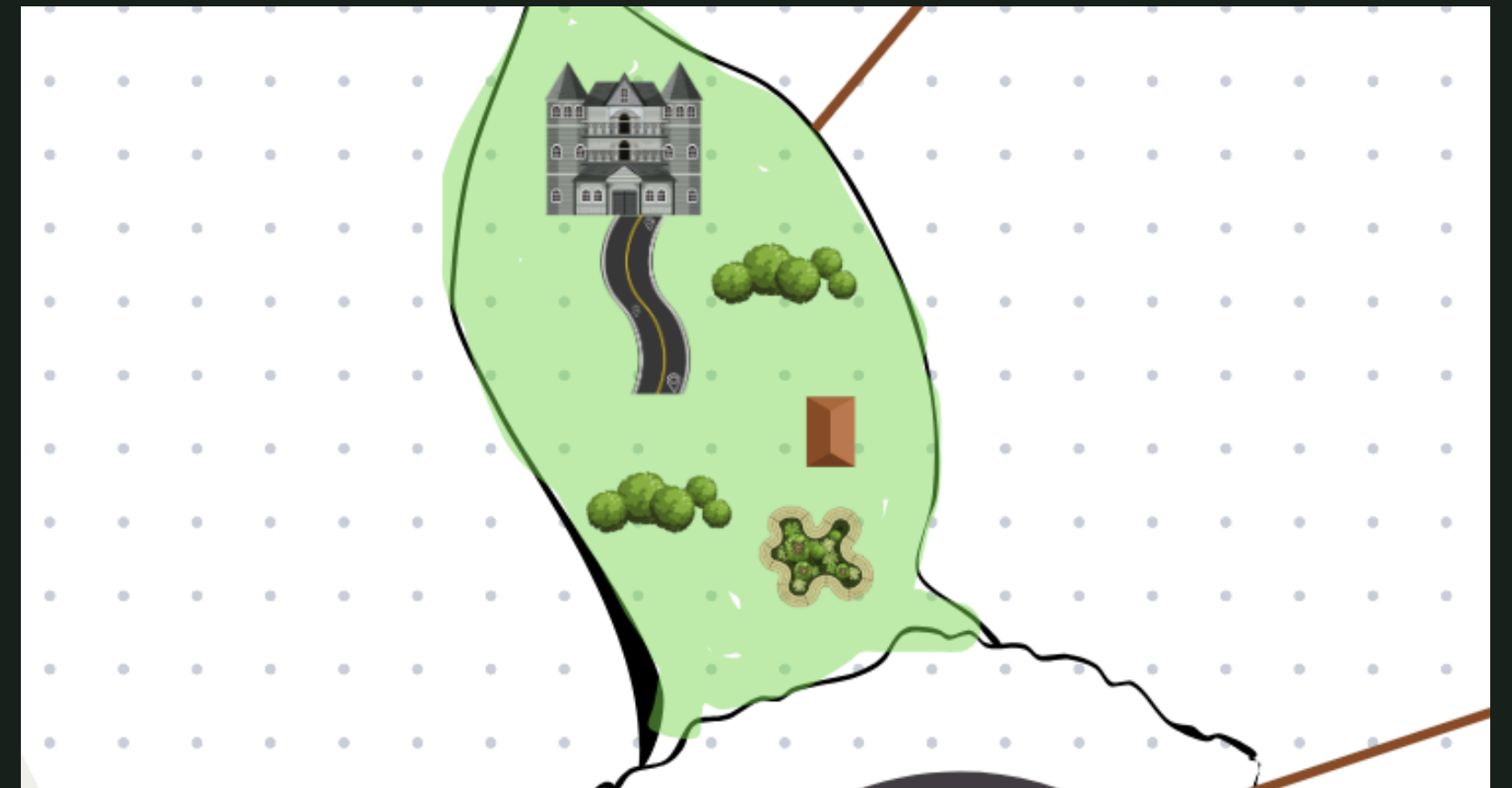
CRYSTAL LAGOON - 10 ACRES

Blue lagoon pools in resorts offer a serene and enchanting escape for guests seeking relaxation and rejuvenation. These stunning pools, often surrounded by lush tropical landscapes, mimic the beauty of natural lagoons with their vibrant turquoise waters. Guests can unwind on comfortable loungers or swim in the crystal-clear waters, all while enjoying the soothing sounds of nature. Many resorts enhance the experience by incorporating swim-up bars and private cabanas, providing the perfect setting for both socializing and solitude. Whether lounging under the sun or taking a refreshing dip, blue lagoon pools create an idyllic atmosphere for an unforgettable vacation.



CHAIRMAN'S GRAND MANSION - 5 ACRES

this grand mansion boasts an elegant façade characterized by intricate brickwork and towering arched windows. The opulent interior features lavish chandeliers that illuminate spacious rooms adorned with exquisite moldings and rich, sumptuous fabrics. Each corner reveals a touch of history, with antique furnishings and art pieces that narrate stories of a bygone era. Lush gardens surround the property, providing a serene escape from the bustling city, while the classic architecture exudes a timeless charm that captivates anyone who crosses its threshold.



THANK YOU



APL GROUP

Elevating Standards, Building Futures.